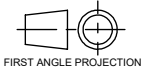


TITLE:



IF IN DOUBT ASK

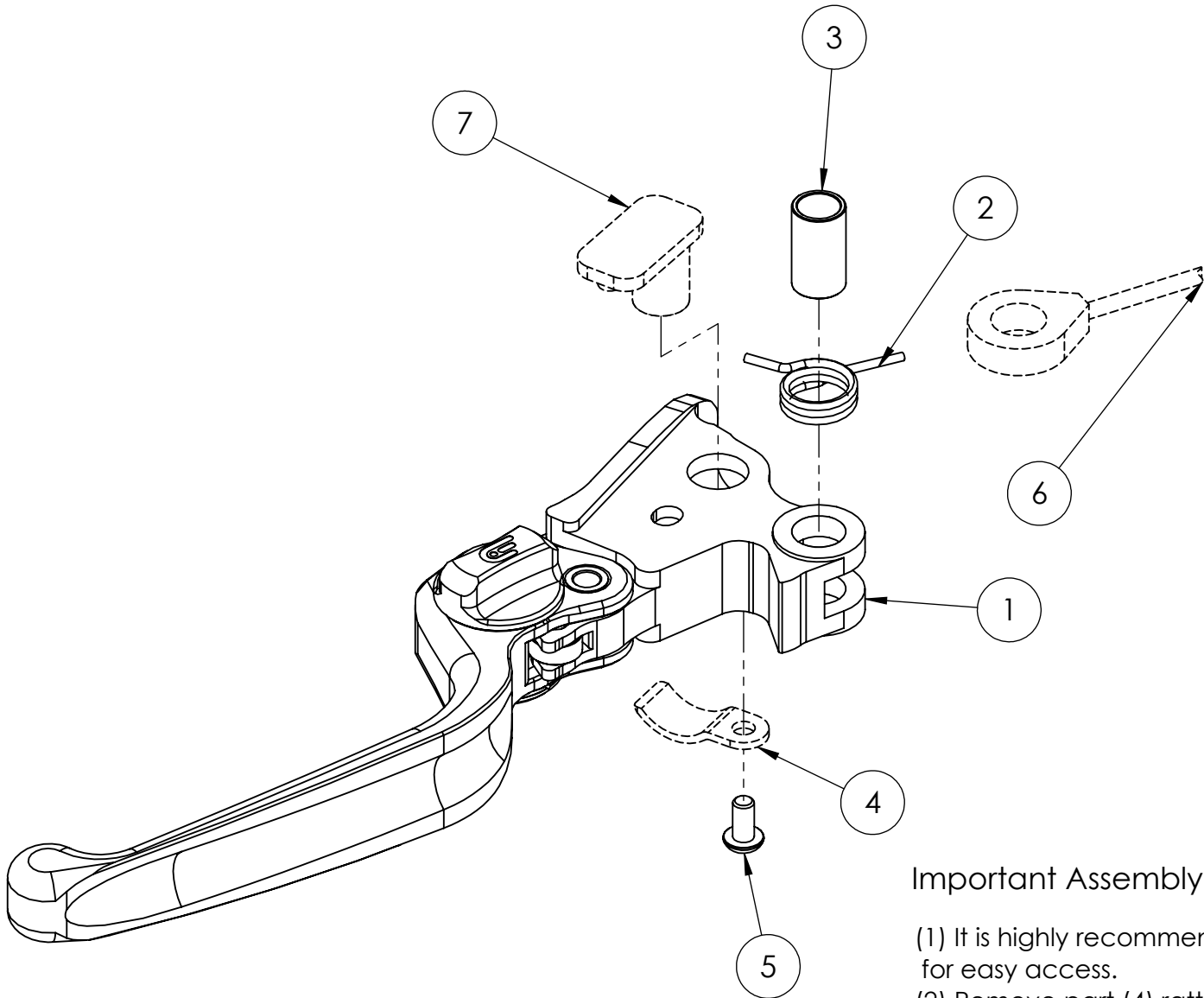
PROPRIETARY AND CONFIDENTIAL  
THE INFORMATION CONTAINED IN THIS DRAWING IS THE SOLE PROPERTY OF OBERON PERFORMANCE LIMITED.  
ANY REPRODUCTION IN PART OR AS A WHOLE WITHOUT THE WRITTEN PERMISSION OF OBERON PERFORMANCE LIMITED  
IS PROHIBITED.



11 Havant Business Centre  
Harts Farm Way  
Havant  
Hampshire  
PO91 HU  
UK  
Tel: +44 02392 481 188  
Fax: +44 02392 492 458  
admin@oberon-performance.co.uk  
Web: oberon-performance.co.uk  
© Oberon Performance Limited

REVISIONS		
REV	DESCRIPTION	DATE

ITEM NO.	DESCRIPTION	QTY.
1	C249 Fitting Adaptor	1
2	Torsion Spring	1
3	Torsion Spring Sleeve	1
4	OEM Rattle Clip	1
5	M4 x 8 Socket Button	1
6	OEM Cable	1
7	OEM Cable Location Pin	1



Important Assembly Suggestions

- (1) It is highly recommend to remove the perch from the handlebar for easy access.
- (2) Remove part (4) rattle clip for OEM lever and fix to the assembly with fastener (5)
- (3) Position the short leg of the torsion spring(2) into the small hole before inserting sleeve (3).
- (4) Offer up the cable and secure in place using the OEM cable location pin(7).
- (5) Use a set of long nose needle pliers when trying to guide the long leg of the torsion spring into the Harley Davidson perch.

NB Parts (4) & (7) are OEM parts are are required for the installation.  
Everything else is included in the kit.

DO NOT SCALE DRAWING		REVISION	
	NAME	SIGNATURE	DATE
DRAWN			
CHK'D			
APPV'D			
MFG			
Q.A			

UNLESS OTHERWISE SPECIFIED:  
DIMENSIONS ARE IN MILLIMETERS  
TOLERANCES:  
LINEAR: +/- 0.10  
ANGULAR: +/- 0.5°  
DEBURR AND  
BREAK SHARP  
EDGES

FINISH:

WEIGHT: MATERIAL:

TITLE:  
**C249 Instruction  
Supplement**

DWG NO.