

# 14, 18 & 22 Instructions

SKU: MIA-0114, MIA-0118, MIA-0122

## Preparation:

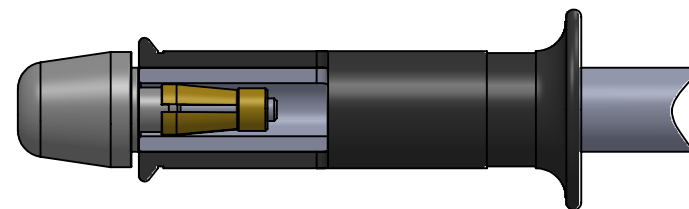
Before installing your new purchase please read and understand these instructions fully and make sure you have the required tools at hand.

1. Firstly remove the original bar end if present.
3. Check that the internal bore is clear of obstructions and burrs. Measure the internal bore and note down the size. Select the largest collet/adaptor that will fit into the hole with out forcing it in.
4. If one of the aluminium adaptors is a closer fit, slide this over the 14mm brass collet with the open end of the machined slots facing outwards.
5. For bars with an internal bore from 12mm to 13.5mm. Push the bar end (2) into the bar using a hex drive key in the bolt. If the collet does not collapse readily then loosen the bolt further and persuade the bolt by tapping against the hex key with a soft mallet. The brass collet should collapse fairly easily and slide into the handlebar. Fully tighten the M6 (1) bolt.
6. For bars with bores above 14mm use the adaptors or dedicated collets. For 18mm or 22mm replace the complete collet. For 17mm or 19mm slide the required adaptor over the brass collet as shown in the diagram. Push the bar end (2) into the handlebar using a 5mm hex drive key. Fully tighten the M6 (1) bolt.
13. Recheck the tightness of all fastenings.
14. We suggest you apply a very small amount of thread locker to all fasteners. DO NOT use red Loctite. Periodically recheck all fastenings for tightness.

14

18

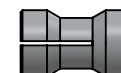
22



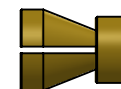
17mm Adaptor



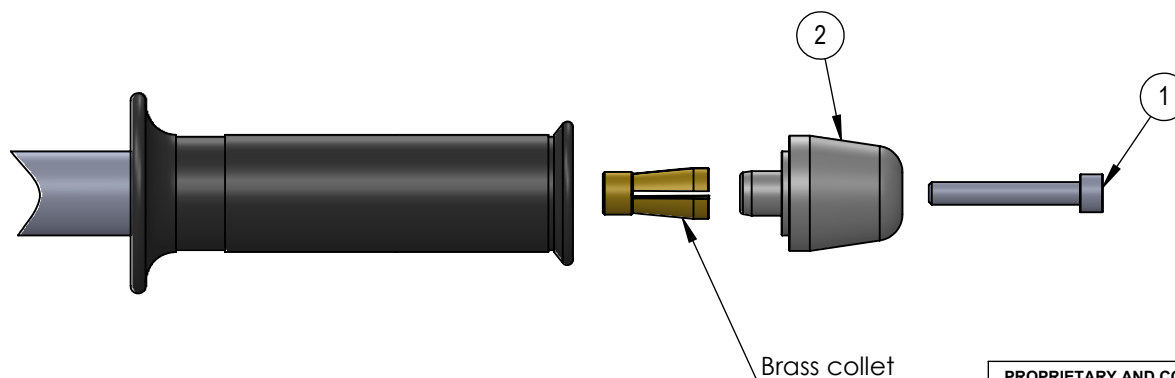
19mm Adaptor



18mm Collet



22mm Collet



Brass collet

## PROPRIETARY AND CONFIDENTIAL

THE INFORMATION CONTAINED IN THIS DRAWING IS THE SOLE PROPERTY OF OBERON PERFORMANCE LTD. ANY REPRODUCTION IN PART OR AS A WHOLE WITHOUT THE WRITTEN PERMISSION OF OBERON PERFORMANCE LTD IS PROHIBITED.

DO NOT SCALE DRAWING

REVISION:



TITLE:

Adjustable Mirror Bar End

DWG NO:

Installation Instructions

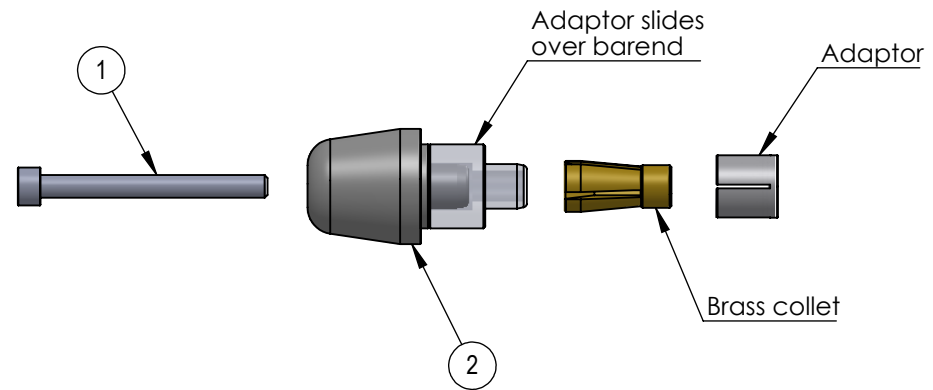
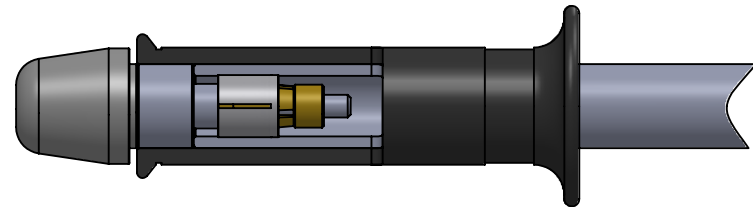
A4

SCALE:

# Adaptor 16 Instructions

**Preparation:**  
Before installing your new purchase please read and understand these instructions fully and make sure you have the required tools at hand.

1. Firstly remove the original bar end if present.
3. Check that the internal bore is clear of obstructions and burrs. Select the largest collet that will fit into the hole with out forcing it in.
4. If one of the aluminium adaptors is a closer fit, slide this over the 14mm brass collet with the open end of the machined slots facing outwards.
6. Push the mirror bar end (2) into the handlebar using a 5mm hex drive key. Fully tighten the bolt (1).
11. Recheck the tightness of all fastenings.
12. We suggest you apply a very small amount of thread locker to all fasteners. DO NOT use red Loctite. Periodically recheck all fastenings for tightness.



16

DO NOT SCALE DRAWING		REVISION:	
			
TITLE:  Adjustable Mirror Bar End			
DWG NO:  Installation Instructions			A4
SCALE:			

**PROPRIETARY AND CONFIDENTIAL**

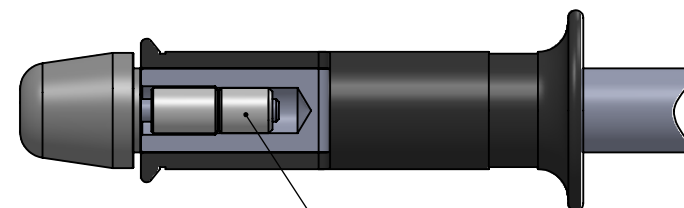
THE INFORMATION CONTAINED IN THIS DRAWING IS THE SOLE PROPERTY OF OBERON PERFORMANCE LTD. ANY REPRODUCTION IN PART OR AS A WHOLE WITHOUT THE WRITTEN PERMISSION OF OBERON PERFORMANCE LTD IS PROHIBITED.

# Adaptor 60 Instructions

## Preparation:

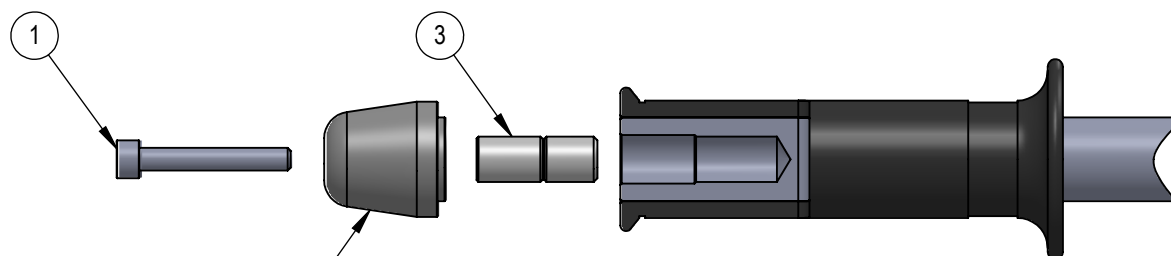
Before installing your new purchase please read and understand these instructions fully and make sure you have the required tools at hand.

1. Firstly remove original barend.
2. Apply thread locker to M12 adaptor (3) and drive home using a 6mm hex drive. Leave to cure. Red Loctite is recommended.
3. Fit the barend (2) to the handlebar. Fully tighten the M6 bolt (1).
4. Recheck the tightness of all fastenings.
5. We suggest you apply a very small amount of thread locker to all fasteners. DO NOT use red Loctite. Periodically recheck all fastenings for tightness.



Apply threadlocker here

60



DO NOT SCALE DRAWING

REVISION:



TITLE:

Adjustable Mirror Bar End

### PROPRIETARY AND CONFIDENTIAL

THE INFORMATION CONTAINED IN THIS DRAWING IS THE SOLE PROPERTY OF OBERON PERFORMANCE LTD. ANY REPRODUCTION IN PART OR AS A WHOLE WITHOUT THE WRITTEN PERMISSION OF OBERON PERFORMANCE LTD IS PROHIBITED.

DWG NO:

Installation Instructions

A4

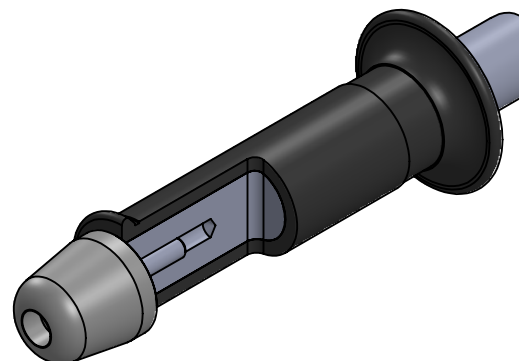
SCALE:

# Adaptor 06 Instructions

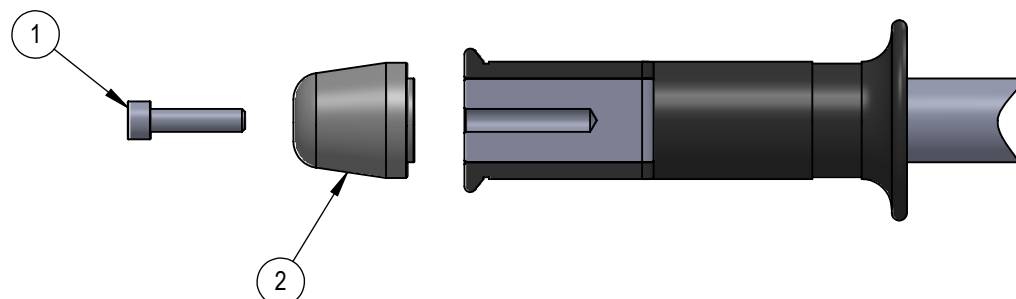
## Preparation:

Before installing your new purchase please read and understand these instructions fully and make sure you have the required tools at hand.

1. Firstly remove original barend.
2. Fit the barend (2) to the handlebar. Fully tighten the M6 bolt (1).
3. Recheck the tightness of all fastenings.
4. We suggest you apply a very small amount of thread locker to all fasteners. DO NOT use red Loctite. Periodically recheck all fastenings for tightness.



# 06



### PROPRIETARY AND CONFIDENTIAL

THE INFORMATION CONTAINED IN THIS DRAWING IS THE SOLE PROPERTY OF OBERON PERFORMANCE LTD. ANY REPRODUCTION IN PART OR AS A WHOLE WITHOUT THE WRITTEN PERMISSION OF OBERON PERFORMANCE LTD IS PROHIBITED.

DO NOT SCALE DRAWING

REVISION:



TITLE:

## Adjustable Mirror Bar End

DWG NO:

### Installation Instructions

A4

SCALE:

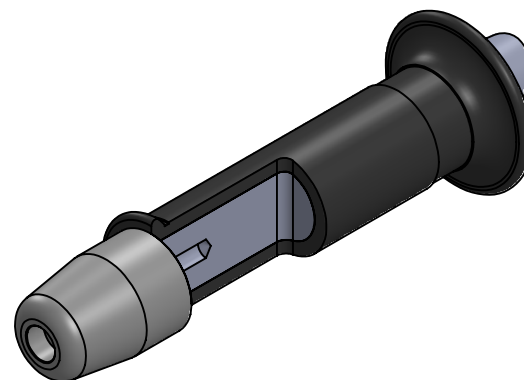
# Adaptor 26 & 28 Instructions

SKU: MIA-0126, MIA-0128

## Preparation:

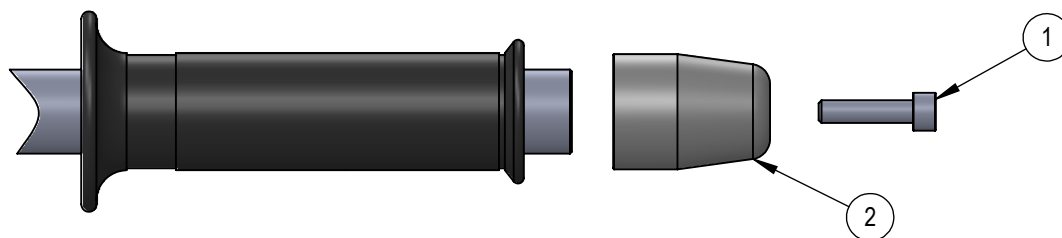
Before installing your new purchase please read and understand these instructions fully and make sure you have the required tools at hand.

1. Firstly remove original barend.
2. Fit the barend (2) to the handlebar. Fully tighten the M6/M8 (1) bolt depending on your kit.
3. Recheck the tightness of all fastenings.
4. We suggest you apply a very small amount of thread locker to all fasteners. DO NOT use red Loctite. Periodically recheck all fastenings for tightness.



26

28



DO NOT SCALE DRAWING

REVISION:



TITLE:

Adjustable Mirror Bar End

DWG NO:

Installation Instructions

A4

SCALE:

## PROPRIETARY AND CONFIDENTIAL

THE INFORMATION CONTAINED IN THIS DRAWING IS THE SOLE PROPERTY OF OBERON PERFORMANCE LTD. ANY REPRODUCTION IN PART OR AS A WHOLE WITHOUT THE WRITTEN PERMISSION OF OBERON PERFORMANCE LTD IS PROHIBITED.