

A direct replacement for Kawasaki models with 5 bolt head visible pattern on the original item.

1. The fuel kit is supplied pre-assembled and only requires simple fixing to the bike.
2. Remove the original assembly complete from the petrol tank.
3. Locate the tank to body sealing o-ring(#4). Position the seal in the recess on the underside of the main body (#5). The petroleum jelly is there to temporary hold the seal in place whilst fitting.
4. With the bike in an upright position, lower the assembly into place. Loosely fit the M5 x 20mm (#6) countersunk bolts into position and tighten down. This will compress the body sealing o-ring(#4) to the spout of the tank forming a fluid tight seal.
5. The fuel filler cap is now ready for use. NEVER over tighten the cap(#1). Only a gentle twist is needed for a positive seal. The o-ring(#2) is there to prevent over tightening.

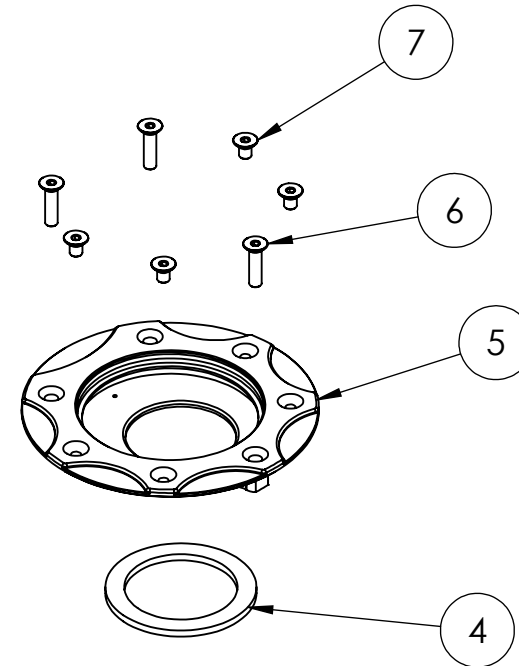
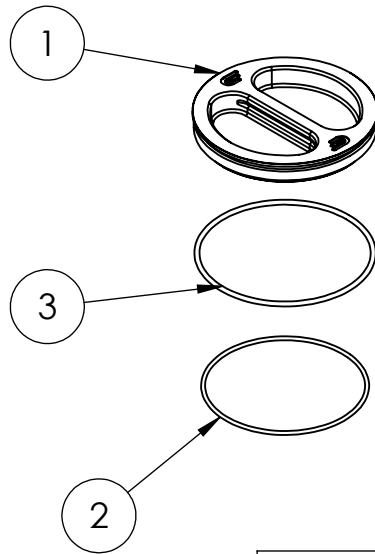
N.B.

The seals are made from a special material called Viton which is designed for petroleum use. NEVER substitute these seals with anything else.

DO NOT use with the o-rings removed.

SAFETY is of paramount importance. Please ensure this product is correctly fitted and tested before using your motorcycle.

ITEM NO.	DESCRIPTION	QTY.
1	Fuel cap	1
2	O Ring - Small	1
3	O Ring - Large	1
4	Viton Gasket	1
5	Main Fuel Body	1
6	M5 x 20mm	3
7	M5 x 8	4



PROPRIETARY AND CONFIDENTIAL
 THE INFORMATION CONTAINED IN THIS
 DRAWING IS THE SOLE PROPERTY OF
 OBERON PERFORMANCE LTD. ANY
 REPRODUCTION IN PART OR AS A WHOLE
 WITHOUT THE WRITTEN PERMISSION OF
 OBERON PERFORMANCE LTD IS
 PROHIBITED.

		DIMENSIONS ARE IN MM TOLERANCES: FRACTIONAL ± 0.1 ANGULAR: MACH ± 0.5 BEND \pm TWO PLACE DECIMAL ± 0.1 THREE PLACE DECIMAL ± 0.05	NAME	DATE
			DRAWN	
			CHECKED	
			ENG APPR.	
			MFG APPR.	
			Q.A.	
			COMMENTS:	
NEXT ASSY	USED ON	FINISH		
APPLICATION		DO NOT SCALE DRAWING		



Installation Instructions

ISSUE	DWG. NO.	REV.
	FUE-7004	A
SCALE: 1:1	WEIGHT:	SHEET 1 OF 1