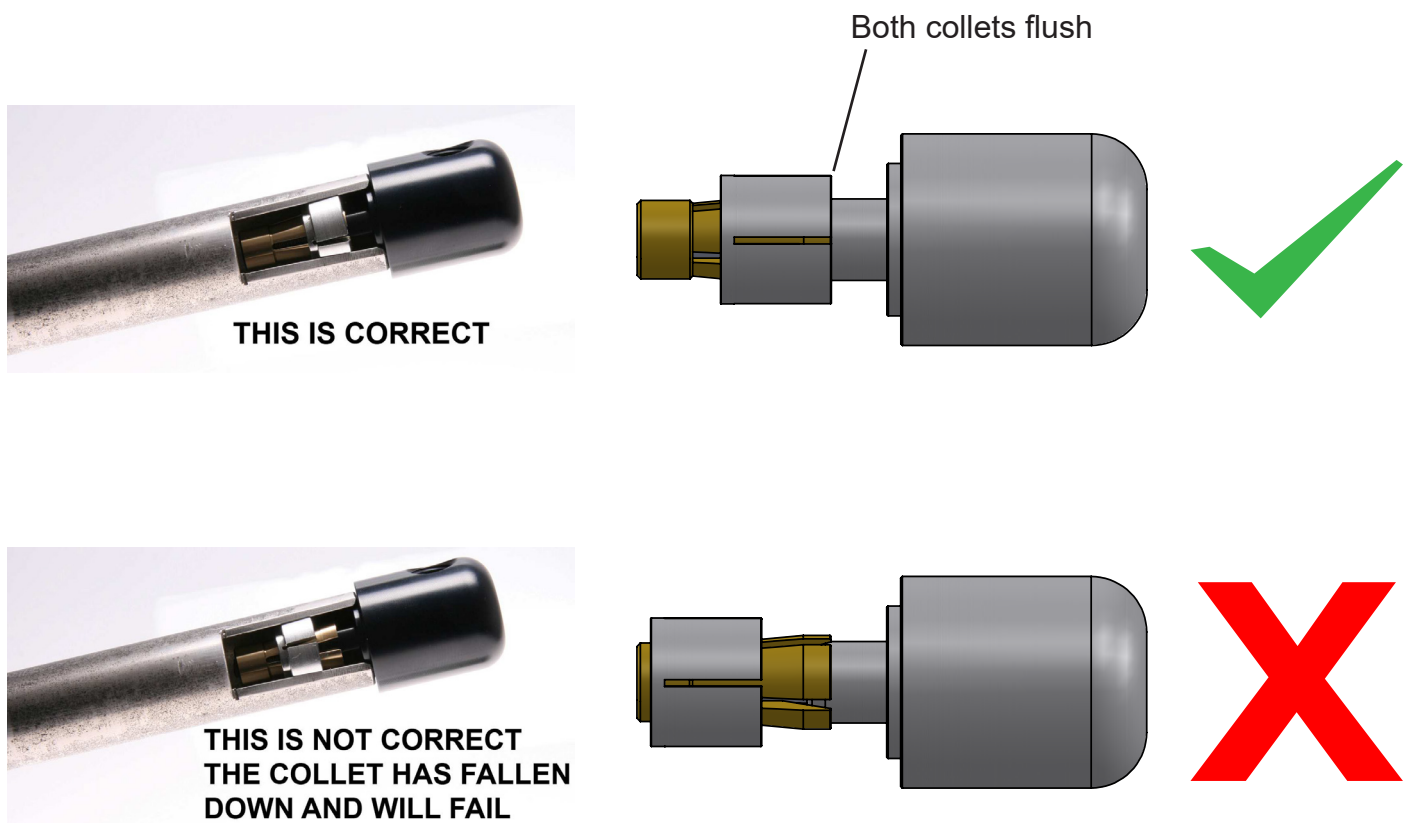


# Collet Installation Supplement

## IMPORTANT:

To install your Oberon Performance bar end product please follow these instructions carefully. For sizes over 15mm use the largest aluminium sleeve provided that gives closest fit and ensure the sleeve is positioned as demonstrated below. Once positioned as shown (using the 6mm Bolt to push in the collet) - be sure to tighten by hand until a creaking/groaning sound can be heard from the collet. Failure to position the sleeve and achieve sufficient tension may cause your product to fail. Whilst tightening, prevent the bar end from rotating to ensure a solid fixing.



Once your bar end product is installed be sure to regularly and periodically test all fasteners and fittings to avoid product damage. If your product has grub screws, then we recommend using a little thread lock compound for correct fixture. Do not use power tools to tighten the bolts.