

ITEM NO.	DESCRIPTION	QTY.
1	Fuel Filler Body	1
2	Fuel Filler Cap	1
3	M5 x 16mm Countersunk	7
4	Fuel Tank to Body Sealing O-Ring	1
5	Cap Base Sealing O-Ring	1
6	Cap Sealing O-Ring	1

Fitting Instructions

A direct replacement for Kawasaki models with 7 bolt head visible pattern on the original item.

1. The fuel kit is supplied pre assembled and only requires simple fixing to the bike.

2. Remove the original assembly complete from the petrol tank.

3. Locate the Tank to Body sealing O-Ring (#4). Position the seal in the recess on the underside of the main body (#1). The petroleum jelly is there to temporary hold the seal in place whilst fitting.

4. VERY carefully lower the assembly into place without disturbing the seal. Loosely fit the M5 x 16mm (#3) countersunk bolts into position and tighten down evenly. This will compress the Body Sealing O-Ring to the spout of the tank forming a fluid tight seal.

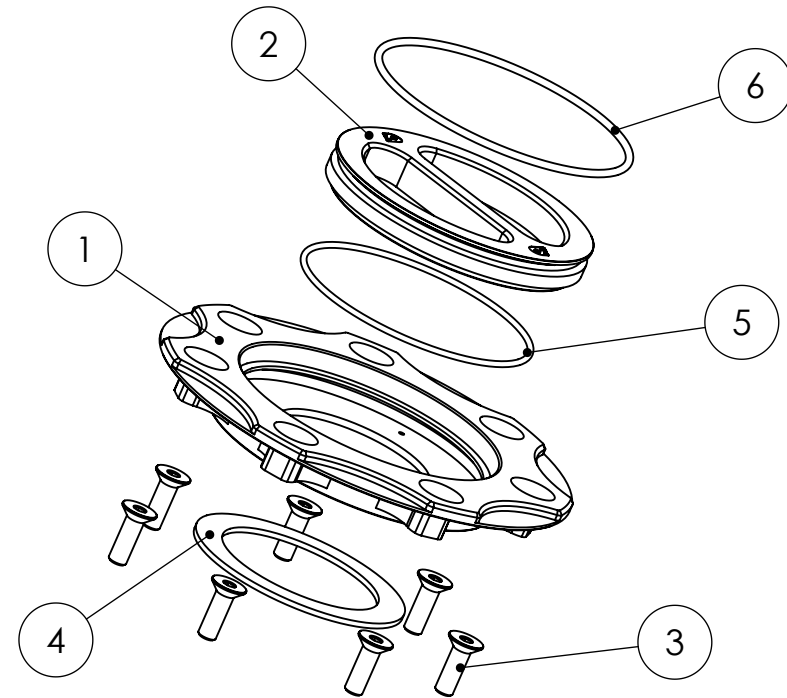
5. The fuel filler kit is now ready for use. NEVER over tighten the cap (#2). Only a gentle twist is needed for a positive seal. The O-Ring (#5) is there to prevent over tightening.

N.B

The seals are made from a special material called Viton which is designed for petroleum use. NEVER substitute these seals with anything else.

DO NOT use with the O-Rings removed.

SAFETY is of paramount importance. Please ensure this product is correctly fitted and tested before using you motorcycle.



14 March 2007 16:43:54

UNLESS OTHERWISE SPECIFIED: DIMENSIONS ARE IN MILLIMETERS SURFACE FINISH: TOLERANCES: LINEAR: ANGULAR:			FINISH:		DEBUR AND BREAK SHARP EDGES		DO NOT SCALE DRAWING		REVISION	
DRAWN			SIGNATURE		DATE		TITLE:		KAWASAKI 7 Hole Fuel Filler Assembly	
CHK'D										
APPV'D										
MFG										
Q.A					MATERIAL:		DWG NO.		A4	
							99721-00 fitting instructions			
					WEIGHT:		SCALE:1:2		SHEET 1 OF 1	