

1	2	3
ITEM NO.	DESCRIPTION	QTY.
1	Fuel Filler Cap	1
2	Fuel Filler Body	1
3	M5 x 8mm Countersunk	4
4	M5 x 20mm Countersunk	3
5	Cap Sealing O-Ring	1
6	Cap Base Sealing O-Ring	1
7	Tank to Body Sealing O-Ring	1
8	M5 Body Seating Spacer	3



Fitting Instructions

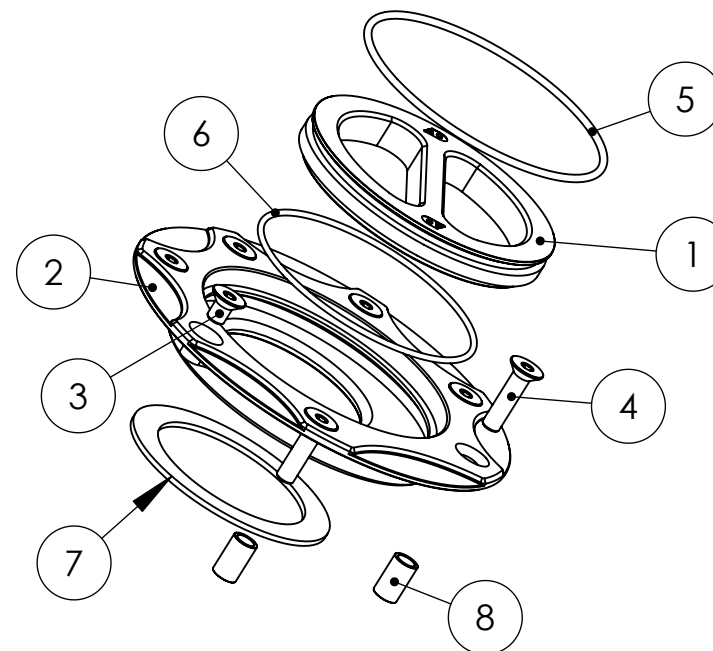
A direct replacement for Kawasaki models with 5 bolt head visible pattern on the original item.

1. The fuel kit is supplied pre assembled and only requires simple fixing to the bike.
2. Remove the original assembly complete from the petrol tank.
3. Locate the Tank to Body sealing O-Ring (#7). Position the seal in the recess on the underside of the main body (#2). The petroleum jelly is there to temporary hold the seal in place whilst fitting.
4. With the bike in an upright position, place the 3 (#8) seating spacers over the three threaded holes. VERY carefully lower the assembly into place without disturbing the spacers. Loosely fit the M5 x 20mm (#4) countersunk bolts into position and tighten down. This will compress the Body Sealing O-Ring to the spout of the tank forming a fluid tight seal.
5. The fuel filler kit is now ready for use. NEVER over tighten the cap (#1). Only a gentle twist is needed for a positive seal. The O-Ring (#6) is there to prevent over tightening.

N.B
The seals are made from a special material called Viton which is designed for petroleum use. NEVER substitute these seals with anything else.

DO NOT use with the O-Rings removed.

SAFETY is of paramount importance. Please ensure this product is correctly fitted and tested before using you motorcycle.



14 March 2007 16:43:41

UNLESS OTHERWISE SPECIFIED: DIMENSIONS ARE IN MILLIMETERS SURFACE FINISH: TOLERANCES: LINEAR: ANGULAR:		FINISH:	DEBUR AND BREAK SHARP EDGES	DO NOT SCALE DRAWING	REVISION
DRAWN			TITLE: KAWASAKI 5 Hole Fuel Filler Kit		
CHK'D			DWG NO. 99722-00 fitting instructions		
APPV'D			SCALE:1:1		
MFG			SHEET 1 OF 1		
Q.A			A4		
WEIGHT:					